

# Mobil<sup>SM</sup> Fleet Care

## FLEET MANAGEMENT MADE BETTER

### COMPREHENSIVE TELEMATIC FEATURES



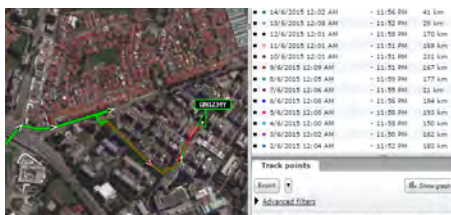
GPS FLEET TRACKING



REAL-TIME FLEET VIEW



GEO-FENCING



VEHICLE USAGE HISTORY & PLAYBACK



CUSTOM REPORTS



MONITOR VEHICLE SPEED & IDLE TIME

### BENEFIT OF TRACKING SERVICES TO APPEAL TO USER / END-CUSTOMER

#### WITH GPS TRACKING

##### Always on time

Smart scheduling and real-time traffic updates enable efficient routing so your trucks can get where they need to be on time, increasing positive customer experiences.

##### Lowered fuel costs

Along with smarter routing, built-in sensors monitor driver's tendencies, allowing managers to create vehicle protocols and hold drivers accountable for efficient fuel usage.

##### Increased overall productivity

All of these systems blanket your entire operation, enabling you to keep your business running smoothly and ensure nothing slips through the cracks.

##### Grow your bottom line

By completing more work orders per day, lowering fuel costs and simply running a more efficient business, you can grow your bottom line.



#### WITHOUT GPS TRACKING

##### Repeated tardiness

Between getting lost, taking long routes, getting stuck in traffic and inefficient scheduling, your technicians are always making customers wait.

##### Higher fuel costs

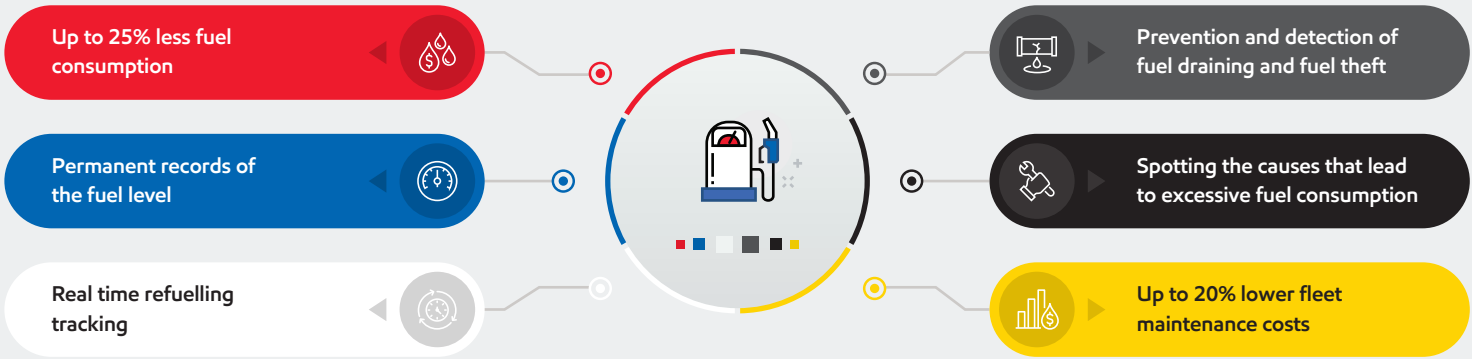
Fuel usage is uncontrollable if your employees are taking haphazard routes, wasting fuel with improper driving habits and taking advantage of vehicle privileges.

##### Operational inefficiencies

A lack of these operational systems will inevitably lead to inefficiencies in the field that will damage customer experiences and cost your business money in the long run.

##### Struggle to stay afloat

Without the ability to effectively manage all your assets in the field, you won't be able to deliver positive customer experiences and compete against other service providers.



OUR PACKAGES

LITE	MASTER	MASTER PLUS	PRO
<ul style="list-style-type: none"> <li>Fleet management sytem with Mobil<sup>SM</sup> Fleet Care TrackSYNQ Dashboard.</li> <li>Works for most fleet users to effectively monitor vehicles on the road.</li> <li>Proper reporting with track history.</li> </ul>	<ul style="list-style-type: none"> <li>Fleet management sytem with Mobil<sup>SM</sup> Fleet Care TrackSYNQ Dashboard.</li> <li>More advanced fleet monitoring with custom reporting.</li> <li>Driving behavior to monitor safety and instant alerts.</li> </ul> <i>For MY: Added Fuel Option as optional.</i>	<ul style="list-style-type: none"> <li>MDVR (Mobile Digital Video Recorder), a video recording with 2 cameras and 1TB storage recording.</li> <li>Live streaming to monitor the fleet directly.</li> <li>This MDVR has GPS tracking unit to monitor vehicle location real-time and history.</li> </ul>	<p>OBD (on-board diagnostic) device to read vehicle data, as the means to monitor fleet on Fleet Management System with Mobil<sup>SM</sup> Fleet Care TrackSYNQ and dashboard. The data will use OBDII port in the vehicle, monitoring driving behavior and instant alerts.</p>
<b>Software</b> Mobil <sup>SM</sup> Fleet Care TrackSYNQ	<b>Software</b> Mobil <sup>SM</sup> Fleet Care TrackSYNQ	<b>Software</b> Mobil <sup>SM</sup> Fleet Care TrackSYNQ TrackSYNQ Ceiba-II	<b>Software</b> Mobil <sup>SM</sup> Fleet Care TrackSYNQ
<b>Connectivity</b> M2M SIMcard GSM	<b>Connectivity</b> M2M SIMcard GSM	<b>Connectivity</b> M2M SIMcard GSM 30GB capacity monthly	<b>Connectivity</b> M2M SIMcard GSM

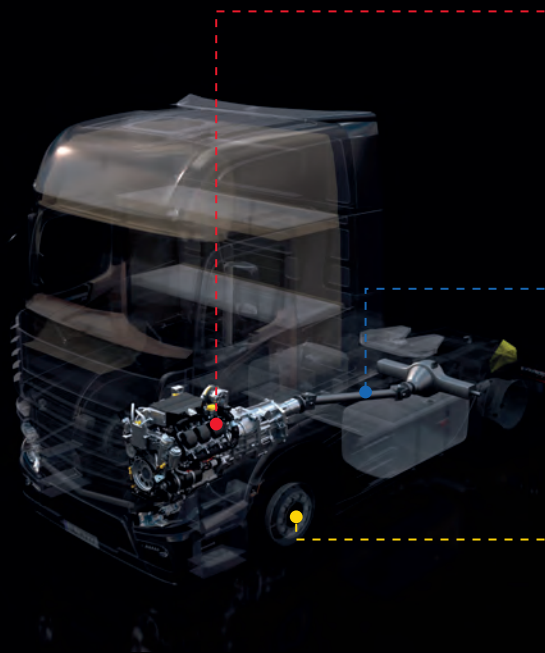
FEATURES

FEATURES	LITE	MASTER	MASTER PLUS	PRO
Mobil <sup>SM</sup> Fleet Care dashboard	★	★	★	★
Mobil <sup>SM</sup> Fleet Care fuel efficiency module	★	★	★	★
Mobil <sup>SM</sup> Fleet Care service maintenance alert	★	★	★	★
Vehicle / Asset live location	★	★	★	★
Real time tracking history	★	★	★	★
Geocoding location	★	★	★	★
Geofencing	★	★	★	★
Standard reporting	★	★	★	★
2x custom reporting		★	★	★
Driving behavior based GPS		★	★	★
SMS / Email alerts		★	★	★
Device setting changes (frequency, etc)		★	★	★
OBD data				★
Report based on OBD data				★
Video streaming services			★	
Mobil lubricant products	Kindly speak to our sales representatives to enjoy special bundle discounts			
Mobil Serv Lubricant Analysis (MSLA)				



REAP MORE BENEFITS WITH MOBIL

Mobil Delvac<sup>™</sup>  
Performance by ExxonMobil



#### Engine oil

Mobil Delvac 1<sup>™</sup> ESP 5W-30 / 5W-40  
Mobil Delvac 1<sup>™</sup> 5W-40  
Mobil Delvac<sup>™</sup> XHP 10W -40  
Mobil Delvac<sup>™</sup> MX ESP 15W -40  
Mobil Delvac<sup>™</sup> MX 15W -40  
Mobil Delvac<sup>™</sup> Super Series

#### Driveline fluid

Mobilube 1 SHC<sup>™</sup> Gear Oil Series  
Mobil Delvac 1<sup>™</sup> Gear Oil Series  
Mobilube<sup>™</sup> HD Series  
Mobilube<sup>™</sup> LS Series  
Mobilube<sup>™</sup> GX Series

#### Wheel bearings

Mobilith SHC<sup>™</sup> 220  
Mobilgrease XHP<sup>™</sup> 222  
Mobilgrease XHP<sup>™</sup> 223

## Bumper to Bumper: We have your equipment covered

Since the inception of the Mobil Delvac<sup>™</sup> brand, we have gone the extra mile to provide a range of lubrication solutions that not only helps to extend engine life but life of other components as well. It has taken comprehensive research for us to be able to achieve this. And key to this has been the strong relationship we share with equipment builders.

Our association with them has allowed us to conduct thorough tests to understand the lubrication needs of the industry and create products to meet those needs. In the end, it has given us the confidence to state that Mobil Delvac<sup>™</sup> lubricant products have your equipment covered, bumper to bumper.

## Performance that speaks for itself

Users worldwide have understood the above, and trusted Mobil Delvac<sup>™</sup> on this. Let us hear from some customers on what they have to say since switching to Mobil Delvac.

"Mobil Delvac has proven that a good oil doesn't just lower cost of business, it also provides an assurance of performance. Before using [Mobil Delvac MX<sup>™</sup> 15W-40], the oil drain interval in our trucks was only 10,000 kilometers. But now it has **gone up to 20,000 kilometers.**"



**Kyatmaja Lookman**  
Chairman, Lookman Djaja

"Since switching to [Mobil Delvac 1<sup>™</sup> ESP 5W-40], we've noticed significant improvements across the board. We experienced **increased fuel economy performance**, which led to a noticeable change in **fuel savings.**"



**Grant Thurlow**  
Director, TAS Petroleum

"We have been using Mobil Delvac MX<sup>™</sup> 15W-40 for the past two years. And the resulting **reduction in time spent on engine oil maintenance** is definitely more beneficial to us. Converting to Mobil Delvac has turned out to be one of the most important decisions we have made so far."



**Philip Wong**  
Director, EZ Transportation



Looking for effective solutions to lower costs, enhance efficiency and minimize downtime? Just follow these quick tips:



1

Downspeed engines for fuel optimization



2

Consider extended life coolants



3

Properly spec your drivetrain to enhance powertrain efficiency



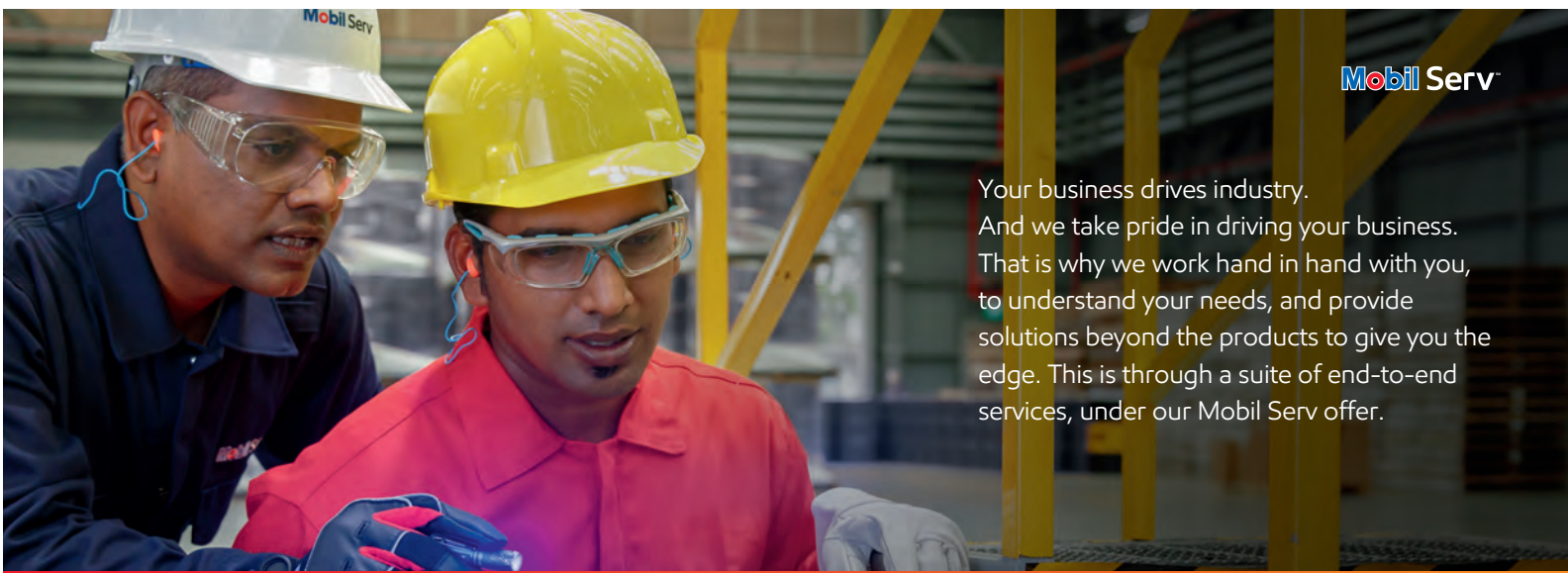
4

Don't underestimate the value of used oil analysis



5

Take advantage of new remote diagnostics technologies



## By your side for better business

Working closely with you, our engineers identify ways to help you take your business further with our extensive suite of Mobil Serv<sup>SM</sup> technical services. All while keeping you on track to achieving your goals in safety, environmental care and productivity.

**Mobil Serv**  
Lubricant Analysis

If your lubricant is not helping you save time and costs while enhancing productivity, it's vital to understand why. That is why you need Mobil Serv Lubricant Analysis. Unlike other programs, it delivers a complete, detailed study telling you everything you need to know about your lubricant performance.

Plus, we work hand-in-hand with equipment builders to help you get the most out of that information, backed by valuable on-site support from our engineers. In the end, you can rest assured that you are benefitting from a service you can trust.

### Drain Interval Study

Oil drain interval is a key measure of lubricant performance - the longer the oil drain interval, the better the lubricant. Through expert insights, our engineers provide detailed information on optimum oil drain capability for different machines. Based on an in-depth understanding of your equipment profile, they work closely with your team to establish a framework of guidelines that makes it easy to identify changes in equipment profile and set up maintenance objectives. They will also conduct periodic reviews to ensure these guidelines are being followed in keeping with any changes.

### Engine Inspection

An engine is only as good as its parts, which is why proper engine inspection is important. Our expert engineers carry out thorough engine inspections, followed by reporting and documentation to ensure your engine is in peak condition. The engine is examined end-to-end during engine overhaul while a partial inspection is carried out during component replacement or repair. In addition, borescope inspections take place during normal Preventive Maintenance. The result? Proper engine performance for your peace of mind.